



2016 ANNUAL REPORT

HELPING  HANDS
MONKEY HELPERS



2017 BOARD OF DIRECTORS

Robert Sanders
Chair of the Board

Lynn Trimby
Treasurer

Eric Reddy
*Chair of the Board Nominating
and Governance Committee*
Chair of the Development Committee

Susan Keyes
Chair of the Strategic Planning Committee

Khristine Carroll
Michele Cunneen
Laura Duerksen
Stephanie Rogers
Alan Solarz
Jane Yusen



facebook.com/MonkeyHelpers



twitter.com/monkeyhelpers



vimeo.com/monkeyhelpers



Instagram: @monkeyhelpers



YouTube: hhmonkeyhelpers

541 Cambridge Street
Boston, MA 02134
617.787.4419

www.monkeyhelpers.org

From the Chair of the Board

Dear Friends,

You are the reason that our monkey recipients across the country have increased independence every day. Your financial support ensures that our service monkeys receive the highest level of care and the training they need to help recipients today and in the future. Thank you for making all of this possible!

I'm sure this isn't the first time that someone from Helping Hands has thanked you for supporting our service monkeys. But, are you aware that your donation helps more than just our monkeys in training?

This year's annual report introduces you to some other people that make our work possible—and who we don't feature on Facebook as often as our cute monkeys. Each of these people makes a difference—just like you—and has a unique story to share. I hope you enjoy learning more about the aspects of our program that involve humans. And, I want to thank everyone who was willing to share their personal story in these pages.

Finally, one important group that isn't featured on these pages is our retired service monkey population. Did you know that Helping Hands monkeys live, on average, 30–35 years? A few are even older. When a monkey returns from a placement, we evaluate their health and consider their age when determining if they should be placed with a recipient again. For monkeys who have reached retirement, our trainers continue to care for them and ensure they have a fulfilling and active life. Caring for our service monkeys has been central to our mission from day one, regardless of their age or health issues. We are committed to continuing the highest standard of care for all the monkeys in our program, no matter what stage of life they're in.

Thank you again for making our recipients and service monkeys a priority in your life. We can't do this work without you!

With deepest gratitude,

Robert Sanders
Chair, Board of Directors





OUR MISSION

Established in 1979, Helping Hands: Monkey Helpers for the Disabled is a national nonprofit 501(c)3 organization that raises and trains capuchin monkeys to provide daily assistance to people living with spinal cord injury or other mobility impairments.

Helping Hands supports each service monkey and his or her human partner during their many years together through interactive mentoring of the placement, and close supervision of the monkey's behavioral, nutritional, and veterinary needs.

Relying on private contributions, Helping Hands provides these specially trained service animals and their lifetime support free of charge to our recipients.

2017 STAFF

Angela Lett
Interim Executive Director

Alison Payne
Director of Monkey Care

Marissa Cuda
Placement Trainer

Anne Lawrence, LICSW
Social Worker

Allyson Migneault
*Placement Trainer and
Veterinary Technician*

Joe Murphy
Husbandry Assistant

Erica Noyes
*Senior Development and
Communication Associate*

Jessica Raider
Placement Trainer

Natalie Shelton-May
*Placement Trainer and
Manager of Husbandry Staff/Volunteers*

Brittany Sprague
*Placement Trainer and
Veterinary Technician*

Skott Wade
Office Manager

Emily Wheeler
Development Assistant



From Judi, Frank, Rebecca, and David, a Foster Family

When the offer was made for us to welcome a retired monkey into our two adult, two children, one dog, one cat, and two beehive family, it did not take us long to make the commitment. Fourteen years later, we could not have imagined our lives without Katie, our primate “relative.” How lucky we have been to be able to have experienced some small part of what a Helping Hands monkey can give to his or her recipient. She came and filled our house with a foreign “language” punctuated by sounds we had only heard in movies. After a short time, it became obvious that she would provide endless fascination, unrelenting devotion to her human kin, and unimagined ingenuity and intelligence. When I think back to the day she arrived at our house, coaxed gently out of her custom made carrier by her trusted Helping Hands staff member, I could never have foreseen the impact that she would have on all of us.

Our family was introduced to Helping Hands by a close neighbor and friend who had learned about the agency while researching area social services. As both my husband and I were social workers, we valued the mission of Helping Hands to provide opportunities for independence and emotional support to mobility challenged recipients. We quickly realized that not only did the agency provide a high quality service, but the training and care of the monkey helpers was carried out with the utmost concern and respect for their physical and emotional well-being.

Our involvement with the Foster Care program has given me the opportunity to work with the Helping Hands staff. Their dedication to the monkeys and recipients is unique and unwavering. Over the years, our family’s commitment to supporting Helping Hands has grown to include our efforts to bring awareness to the mission and services they provide. With the help of my son and daughter, we have built a business that combines our beekeeping hobby with our connection to Helping Hands. Monkey Business Farm, LLC produces all natural beeswax based skin care products. All our profits from this business are donated to Helping Hands. Our goal is to bring awareness to the environmental perils facing honeybees and other natural pollinators, as well as to the services provided by Helping Hands.

“...it became obvious that she would provide endless fascination, unrelenting devotion to her human kin, and unimagined ingenuity and intelligence.”

Our family will forever be grateful to have had the opportunity to live with Katie and be a part of the Helping Hands family.



From Chelsea, a Volunteer

I can't believe it's been more than five years since I started volunteering at Helping Hands! When I interviewed, I was looking for a way to spice up my week for a couple of months during Boston's seemingly endless winters. What I found was a place that quickly made me feel like an important part of an amazing team of people and monkeys; a place that made me proud to be part of a team that makes a life-changing difference for people.

Fridays have now become my favorite day of the week. I'm excited to walk into a room and be greeted by happy capuchins awaiting their breakfast. I may come in exhausted after a long week at my full-time job, but I'm quickly rejuvenated by the energy of each room. Working with animals means every Friday is different. I love every moment shared with these monkeys, from their sweet gestures of affection to their calculated acts

of mischief, and am constantly amazed by their intelligence and antics. I have always loved animals, but volunteering at Helping Hands has brought my appreciation and respect to a whole new level. The monkeys never cease to amaze me, and it has been a special experience getting to work so closely with them.

But more importantly, being part of an organization that makes such a difference in people's lives is why I love my Fridays. Through Helping Hands I have met some of the most amazing people. The trainers work hard every day to give the highest degree of love and care to their monkeys, while training each monkey to become a life-changing partner to someone. The most rewarding part of my volunteer experience is when one of these monkeys, whom I have come to know and love, gets placed with a recipient. It's always hard to say goodbye, but it is so gratifying to see a monkey move on to begin changing a life for the better!

"I have always loved animals, but volunteering at Helping Hands has brought my appreciation and respect to a whole new level."

I want to say thank you to the people and monkeys I have the privilege of working with, and to you who make this program possible. The Monkey College is a very special place, and one I am lucky and grateful to be a part of.



From Alison Payne, Director of Monkey Care

Simply put, my love for this organization's monkeys runs deep. They have been my constant companions and family these past 17 years. While the complexities of capuchins have kept the work challenging during this time, the heartwarming benefits that I have been fortunate to receive in return continue to fuel my enthusiasm for this organization, its recipients, and above all, the monkeys.

The uniqueness of this job makes me feel grateful every day. To have such strong emotional relationships with these animals, and to develop these connections using only love, praise, and positive interactions is truly an experience that few individuals are given. My passion for primates began when I was eight years old and my inner child is still thrilled by every monkey hug, laughing fit, and grooming session.

"After all these years, the monkeys continue to teach me lessons in patience, compassion, and appreciation."

After all these years, the monkeys continue to teach me lessons in patience, compassion, and appreciation. They keep me humble. No matter how long you work

here, you will always be at the bottom of some monkey's hierarchy, useful only for bringing that monkey food, or cleaning up a mess, or being blamed for anything he or she may find wrong at any given moment! But this low-hierarchy role allows another trainer to have that monkey's full trust and respect, a position at the top of the hierarchy that is transferred to a recipient during a placement. My monkeys teach me to live in the moment. They do not care how long my to-do list is, or what may be keeping me up at night. They require—and deserve—my full attention. By being present for them, my mind and body are forced to slow down and relax. Who needs yoga or meditation with a primate around?!

Our recipients inspire me by living lives full of grace, dignity, and generosity in the face of illnesses or injuries that impact them every day. The bonds that they form with their helper monkeys are the most uplifting and touching connections to witness, and make it that much easier to say goodbye to our beloved students when they graduate to a placement.

In short, my gratitude to this organization, and to those of you who make our work possible, is too great to adequately express in words. Quite literally, Helping Hands has shaped me into the person I am.



From Craig, a Recipient

You may already know my story. In 1996, I was involved in a rollover car accident and suffered a C-5 (5th cervical vertebra) bone break in my neck leaving me paralyzed from the shoulders down. I was very athletic and active and the change in my lifestyle was tough. Then, in 2004, I got Minnie.

After 13 years of living with Minnie, I can honestly say, she is loved and protected as if she were my flesh and blood. We are a team—she now helps me or does tasks without being told. If my foot is out of position, she will notice it and fix it without being asked. If I dangle my arm off the armrest, she will grab it and put it back on. A few days ago my phone rang while I was in the other room. It rang and rang. The next thing I see is Minnie bringing me the phone. Truly awesome.

She also helps me quite extensively with my hobbies. If I drop a model train on the ground, she will pick it back up and “help” to put it back on the track. I laugh watching her put it on sideways, backwards, or upside-down, but it amazes me she can even come that close to placing it correctly.

For fun, I taught her to hand me her specific body parts. If I ask for her tail, she hands it to me. If I ask for her foot, she sits down and lifts her foot into my hand.

I have no clue how I was ever able to get by without her. Minnie gets my phone, picks up dropped forks, and gets my writing splint, all of which bring me independence, security, confidence, and the ability to be able to function as a “normal” person. She has truly changed my life for the better in so many ways. She’s so much more than just a task helper, she has made my life in a wheelchair bearable and given me back a life I thought was gone after my car accident.

“Minnie has made my life in a wheelchair bearable and given me back a life I thought was gone after my car accident.”

Independence, personality, and laughter are all part of my life since receiving my monkey helper, Minnie.

I can’t speak for all of us whose lives have been changed by a monkey helper, but I can say that Minnie and I are forever grateful to you for helping to bring us together.



From Briana, a Recipient Family Member

In August 2007, I left for college; a big transition for any student, but especially difficult for me. My mom, Stephany, was injured in a car accident in 1984 and raised me not only as a single mom, but also as a paraplegic. She was my superhero and I was her rock. Leaving for college meant leaving her.

A few years passed. Mom's health declined and she began struggling with depression. I feared what would happen while I was away and couldn't be there for her. I watched her fight her hardest fight, and heard the most gut-wrenching words come out of her mouth. Mom was getting tired, the fight was getting harder, and she doubted her purpose in life. I rallied our small but mighty support system and we got her back. I used to be my mom's reason to get out of bed, her reason to keep going. What was going to happen without me there?

In 2010 my hope was restored. Mom told me she was sending in an application to Helping Hands. I knew this could change her life.

Tracey arrived the following November. I strategically planned my visit home to ensure it didn't interrupt their bonding time. Our slightly intimidating first encounter eventually led to what mom fondly called our sisterly bond. Months passed and I watched mom's light grow stronger. She had help and had found a purpose.

"She...is the light of her life, the topic of every phone call, and the reason my mom continues to fight!"

Unfortunately, Tracey was diagnosed with a rare cancer, but even through this struggle I watched their bond grow. Mom poured her heart into healing this little creature; the love was immense, and the sorrow was overpowering when Tracey passed in December, 2014.

Mom was heartbroken after experiencing the power of Tracey's companionship. She took time to grieve, but experienced new hope when Mikey arrived the following March.

Mikey, like Tracey, is the light of Mom's life, the topic of every phone call, and the reason my mom continues to fight!

Mom's monkey helpers have become part of our family. The love and respect (unless I'm eating her peanut butter) is mutual and appreciated. I know that both Tracey and Mikey have known their purpose in mom's life. The cuddles are more than just a tight squeeze, they're confirmation of love and support.

I can't thank Helping Hands or you who support this life-changing program enough for the impact that you've had on our lives. You, Tracey, and Mikey are the reasons my mom is still here today. You gave her companionship, you gave her hope, you gave her a reason to fight.

Photo (left): Stephany and her monkey helper, Mikey



MONKEY FACTS!

Each year, the monkeys at The Monkey College eat a total of 100 pounds of walnuts.

Financial Summary

Helping Hands continued to experience solid financial results in 2016. Our unrestricted revenue for the year was \$1,172,174, modestly below last year as several foundations reduced their grants, primarily due to changes in their internal funding priorities. Although we were successful in identifying and receiving several new grants, the total amount was below what we anticipated. However, as the year unfolded, we were able to manage our expenses, reduce the operating gap, and bridge the shortfall in revenue with accumulated cash reserves. Even with the drawdown in reserves, we ended the year with over \$330,000 in operating and capacity building reserves. We continue to seek support from new foundations and individual donors to replace these funding sources in the future.

We are pleased to share that in 2016 Helping Hands received a 4-Star rating from Charity Navigator for the fifth consecutive year. They highlighted the organization's ability to "adhere to sector best practices and execute its mission in a financially efficient way." Only 7% of the organizations rated by Charity Navigator have received their top rating for five consecutive years and we are proud to be included in this group.

We are now at the mid-point of our five-year strategic plan, which guides our commitment and activity for the organization. A key element of the plan is preparing for the program's future facility. A building committee task force made up of board members and construction and management professionals was assembled to focus on the location and design of the new facility as well as the value of our current facility, and to develop a financial plan for the project. We have also retained the services of a capital campaign consultant to conduct a feasibility study and help evaluate funding sources for a capital campaign.

After a search begun in 2015, we welcomed a new Director of Development and Communications (DODC), filling a critical role in the organization with a seasoned professional. As our plans for a new facility move forward, one major focus for the new DODC will be preparing and expanding our donor base of support for this new venture.

As noted above, the building committee was tasked with determining the value of our current facility. Within this context, the board decided to place our building at 541 Cambridge Street on the market last winter. This change is reflected on our 2016 Financial Statement. The building is now listed as an "Asset Held for Sale" on the balance sheet with its carrying value rather than part of the "Net Property" category.

Our investment portfolios rebounded nicely in 2016. Our investment account at Neuberger Berman increased over 6% to \$905,869. These funds are unrestricted and we allow all of the investment income and gains to be reinvested. The restricted endowment funds, including the two Charles Evans Funds and the Earl Rogers Estate, ended the year with a combined value of \$528,171. We receive a 5% distribution from each of these funds every year, which augments our cash flow.

We anticipate that 2017 will be another year of transition and progress for Helping Hands. With total assets of \$4,427,563 and no long-term debt except our mortgage, we continue to be in a strong financial position.



FINANCIALS

STATEMENT OF FINANCIAL POSITION

2016

2015

ASSETS

Current Assets	\$457,567	\$583,639
Net Property and Equipment	\$25,456	\$2,286,754
Non-Current Assets	\$3,944,540	\$1,863,710
Total Assets	\$4,427,563	\$4,734,103

LIABILITIES

Current Liabilities	\$140,350	\$139,953
Long-term Liabilities (Mortgage)	\$611,498	\$708,600
Total Liabilities	\$751,848	\$848,553

NET ASSETS

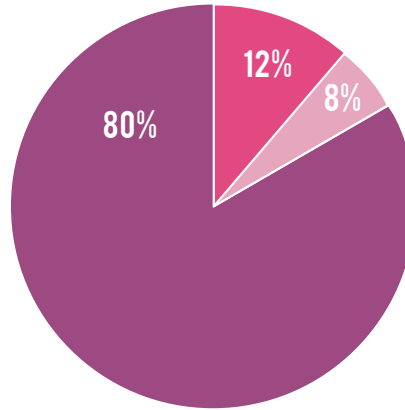
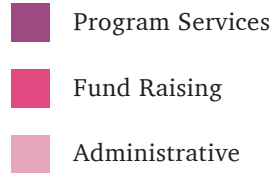
Unrestricted	\$2,826,294	\$3,186,607
Temporarily Restricted	\$324,792	\$173,047
Permanently Restricted	\$524,629	\$525,896
Total Net Assets	\$3,675,715	\$3,885,550

TOTAL LIABILITIES AND NET ASSETS

\$4,427,563

\$4,734,103

EXPENSES BY CATEGORY



STATEMENT OF ACTIVITIES

REVENUE, SUPPORT AND RECLASSIFICATION

Unrestricted Support, Revenue and Reclassification
Restricted Revenue and Reclassification
Total Support, Revenues and Reclassifications

2016	2015
\$1,172,174	\$1,394,271
\$150,478	(\$203,814)
\$1,322,652	\$1,190,457

EXPENSES

Program
Administrative
Fund Raising
Total Expenses

\$1,119,299	\$1,094,040
\$107,936	\$118,686
\$164,117	\$163,876
\$1,391,352	\$1,376,602

NET ASSETS —BEGINNING OF YEAR AS RESTATED
NET ASSETS —END OF YEAR

\$3,885,550	\$4,211,719
\$3,675,715	\$3,885,550



CAPUCHIN CARETAKERS:

A very special thank you to our Capuchin Caretakers—donors who make an automatic monthly contribution to Helping Hands at an amount that works for them.

Your steady support throughout the year means:

- The best care for every monkey in training at The Monkey College, including optimal nutrition, individualized training, ample play time, and regular veterinary check-ups.
- Ongoing support for recipients across the country throughout the lifetime of their service monkey placement, including being able to contact a Helping Hands trainer at any time, day or night.
- Lowered administrative costs so more of your donation goes to help recipients and our monkey helpers.

Helping Hands is pleased to count our Capuchin Caretakers among our most ardent supporters. You make a difference every day in the lives of our recipients and monkey helpers!

If you'd like to join this special group of supporters and become a Capuchin Caretaker, you can learn more and sign up securely online at:

monkeyhelpersdonate.org/monthly

MEMBERS 2016

Anonymous (7)
Stacy and Bjorn Aannestad
Daniel T. Adams
Susan Baldwin
Joanna Beckes
Amy Bruno
Jason Fairchild
Douglas Felt
Laura Galli
Barbara Goldberg
Marcy Ashley Gray
Alan Grulich
Lana and Kenneth Hill
Mary Howard
Gregory Humpa
Susan + and Brad Keyes #
Gretchen U. Kingsbury
Allan Kupelnick
Karen Lamerton
Alison Payne ^ and Douglas Leenhouts
Julina Liefer
Andrew Lindsay
Brian Linville
Betty P. Little-Royer

Maren Madore and Eric Reddy +
Richard McDonald
Shelley and Brett Mendenhall
Julie and Bruce Mirbach
Rebecca Odell
Lois and Richard Paris
Corinne Peters ~
Richard Piet
Kate Poverman and Raphael Bueno
Robert Ratcliffe
Jessica and Dustin Rigler
Robert Sanders +
Caroline Schadle
Ms. Sharon Seyller
Janice and Curtis Shelton
Rebecca Sherwood
Björn Darri Sigurðsson
Jan Smid
Ben Smoot
Camille Stanley
Susan and John Warshawsky
Annette Winterbottom
John Yang

+ Board Member ^ Employee ~ Monkey Helper Recipient # Foster Family



SIMIAN SOCIETY: RECOGNITION OF SPECIAL GIFTS

The Simian Society recognizes donors who choose to leave a gift to Helping Hands in their will. Your decision to make a donation as part of your estate plan provides a legacy for the work we do every day.

Leaving a gift in your will is an easy way to give back and still make sure you're able to provide for yourself and your family throughout retirement. Helping Hands is proud to recognize the generosity of our current Simian Society members, listed below:

Lydia Ainsley
Philip Bloedorn
Craig Cook ~
Elena Damien
Mary Elizabeth Durfee
Andrea and Joseph T. Finnerty
Donna Lee Graham
Marya Hunsicker
James Jatras
Susan + and Brad Keyes # *
Evelyn and Stephen Kowalewski

Joan LeBel
Carol Lewis
Jean A. Michalko
Ronald Olsen
Margaret Opsata
Joan Ordy
Joan Pelnar
Malinda Sanders
Lynn + and Ross Trimby
Mer Zovko and Paul Chebator

As some of our most committed supporters, Simian Society members receive special communications from Helping Hands throughout the year, providing them with an insider's perspective, and are invited to a yearly luncheon.

If you have already included Helping Hands in your will—or are interested in learning more about a gift—we'd like to make sure you are recognized as a Simian Society member. Please contact Angela Lett, Interim Executive Director, at angelal@monkeyhelpers.org or at 617.787.4419 x114 so that we may officially welcome you into the Simian Society.

CORPORATE & FOUNDATION GIVING

\$100,000+

Foundation Robmar

\$25,000+

Bernice and Milton Stern Foundation
Johnson Family Foundation
Liberty Mutual Foundation
Spring Point Partners
The Lore Kann Foundation
The Merancas Foundation, Inc.
The Michele and Agnese Cestone Foundation
The Powell Foundation

\$10,000+

Bushrod H. Campbell and Adah F. Hall
Charity Fund
Copeland Family Foundation, Inc.
Frog Crossing Foundation
Joan K Sexton Foundation
The Helen W. Bell Charitable Foundation
The Montei Foundation
The Rands Foundation

\$5,000+

Brian and Joelle Kelly Family Foundation
K Ten Kids Foundation, Inc.
Keyes North Atlantic
Laura J. Niles Foundation
Rockland Trust-Peoples Federal Foundation
The Charles Evans Foundation
The Eleanor P. Stuart and Mary C. Stuart
Family Foundation

The Fuller Foundation
The Gordon Family Foundation
The Max and Victoria Dreyfus Foundation, Inc.
Whitney Young Children's Foundation

\$1,000+

Adaptive Control Systems, Inc.
Bresky Foundation
Frederick V. Davis, Jr. Living Trust
Howland Capital Management Inc.
Louise Pfister Charitable Foundation, Inc.
MathWorks, Inc.
Partners + Simons
Professional Capital Services, LLC
Smith, Sullivan & Brown, PC
Special People in Need
The Dayton Foundation
The Gerald R. Jordan Foundation
The L. E. Phillips Family Foundation, Inc.
The Richard & Natalie Jacoff Foundation, Inc.
The WORK INC. Foundation for
Charitable Giving
W. Y. Campbell Family Foundation

\$500+

Amazon Smile Fund
Mundt Family Foundation
National Kidney Foundation
Public Partnerships LLC
The Jacob Burns Foundation, Inc.

\$250+

Falmouth Jewish Congregation
Ilene's Hair Salon, Inc.
Mistral
Neuberger Berman LLC
Pledgeling Foundation
Signature Premier Properties
Temple Beth Shalom
The Player Draft
Tufts University School of Veterinary Medicine
Unitarian Universalist Church of Reading
Vulcan Hawaii, Inc.
Wells Fargo Community Support Campaign
Xaverian Brothers High School

MONKEY FACTS!

We do 10 loads of laundry every day at The Monkey College, using 4 bottles of detergent every month.



MONKEY FACTS!

Our monkeys in training need to stay clean! We use 3 bottles of baby shampoo each week for monkey baths.

INDIVIDUAL GIVING

\$25,000+

Combined Federal Campaign Donors
Judi Hindman and Frank Odell #

\$10,000+

Suzanne J. and William D. Payne

\$5,000+

Anonymous
Mary Lou and Christopher Davidson
Linda and Jeff Frack
Patrick Gan
The Hampton Foundation
Peter Laventhol
Joanne and Richard Wightman #
Jane Yusen +

\$1,000+

Anonymous *
Carol and Ray Andrejasich
Marianne B. Callahan
John A. Cataldo Fund
Nancy and Kent Converse ~
Evelyn Furse and Rusty Dassing
Sarah Davis *
Nan and Richard Davis
Eugene Dixon
Nancy Dow and Alexander Wolsk
Kimberly and Dane Dwyer
Kathleen and Steven Eiser
Kelly Fischer
Barbie and Reg Foster
Helen Gillcrist
Marcy Ashley Gray *
Stu Haber and Ellen Matathia
Mary P Happ
Raymond Heller
Susan + and Brad Keyes # *

Marilyn Kucharski
Bronwyn and Jeffrey Lamont
Joan LeBel
Mary Lincoln/M J Surgala Trust
Dorajean and Michael Littrell
Carol and C. John Matteson
Linda McCabe
Wiley McCarthy
Patricia and Kelly McLaughlin
Karen Melo
Robyn Meyn
Christine and Carl Nelson
Ronald Olsen
Joan Ordy
William Osborne
Diane Palombi
Janet E. Pedulla and Thomas V. Pedulla
Kate Poverman and Raphael Bueno *
Maren Madore and Eric Reddy + *
Michelle Rediker and Susan Wedda
Paul Renard
Robert Sanders + *
Erin and Mark Seiden
Debra Amick and Larry Stotts
Brenda Tanger
Marc Tanner
Lynn + and Ross Trimby
Brian Vaughan and Ruth McKee
Susan and John Warshawsky *
David Way
Roselee and James Wayman
Shari Welle
Louise and Michael Wilmot #
Patty Wolfe

\$500+

Anonymous
Lynne Batchelder
Gregory S. Bednarz

Melissa and Daniel Berger
Barbara and Roger Bruttomesso
Clare Bruzek
Anna Buehler
Barbara and John Byrne
Patricia Campbell and Joe Onstott
Pimontip and Antonino Catalano
Carrie and Mark Chaffee
Phyllis and Jerome Cohen
Francie and Charlie Crowley
Michele Cunneen +
Grady Deal
Thomas L. Duquette
Linda and Howard Eisenberg
Margaret and Oren Eisner
Jason Fairchild *
Nancy Langworthy and Harry Feirman
Jean and Jonathan Fox
Matthew Friend
Janine and Thomas Giles
Ann and Neil Gordon
Helen and Lawrence Green
Teresa and Gary Holahan
Theodora Hooton
Hornsby Charitable Lead Annuity Trust
Lavetta and Mark Kennedy
Gretchen U. Kingsbury *
Beth S. and Seth A. Klarman
Allan Kupelnick *
Alison S. Payne ^ and Douglas Leenhouts *
Aviva and David Lee-Parritz
Linda Leffert
Mary Jane and Stephen Lenhardt
Linda Lyster
Stephen M. McBride
Shelley and Brett Mendenhall *
Patricia and Tomas Minor
Marcelle Murray
Joan Pelnar
Corinne Peters ~ *



MONKEY FACTS!

The average length of a placement is 7–12 years. Many monkeys are placed more than once in their careers.

Christina and Thomas Pizzi
 Yesim and Mark Richardson
 Tina and Douglas Riddle
 Stephanie Rogers + *
 Debra and Geoffrey Sampson
 Cathy and Dan Sanders
 Jan Smid *
 Amy and Terrence Smith
 Julie and Alan Solarz +
 Nancy Stegens
 Jeanne Vanecko
 Gary Vilchick
 Monica and Paul Wang
 Katharine Weber
 John Yang *
 Patricia Young

\$250+

Anonymous (3)*
 Daniel T. Adams *
 Gwen Armstrong-Barker
 Linda Austin
 Patricia Ballou
 Rodney Bauer
 Cindy L. and William L. Bech
 Diane Bichell
 Judy and William Bijesse
 Jean Marie Bisson-Remick and Glenn Remick
 William Brady
 Nancy Broude
 Amy Bruno *
 Janet Callahan
 Kathy and Fredrick Callahan
 Robert Cantrell
 David Carpmann
 Jeffrey Miller and William Carter
 Lauri and Brian Chertok
 A. Robert Child
 Sarah and Elia Craig
 Timothy Craig
 Wendy and Michael Cuda
 Evo Deus

Amy Devin
 Ellen Dodge
 Deirdre Howley and Ira Eisenstadt
 Andrea and Joseph Finnerty
 Annie Fowler
 Mary French
 Barbara and Gary Gay #
 Catherine Gerson and Richard Whiteley
 Georgiann G. Ceresse and Richard D. Green
 Alan Grulich *
 Juliette and Alan Hagg
 Elizabeth and Todd Hammer
 Rick Heil
 Megan and Ron Holsinger
 Jane and Michael Horvitz
 Edmund Jacobitti
 Suzanne and Donald Jenkins
 Christine Jerome
 Thouis Jones
 Edna M. Kehres
 Theresa and Guenter Kippschull
 Mary Ellen Klee
 Dianne Knox
 Carol and Leonard Kopelman
 Allyson and Jay Kunstreich
 Karen Lamerton *
 Casper Le Clar
 Susan and Jeff Leenhouts
 Brian Linville *
 Ingrid and William Lynch
 Michael Marconi
 Beth Mazer
 Suzanne McDonald
 Sarah McKnight
 Eileen Mendonsa
 Uta and Stephen Meyer
 Nancy and Michael Migneault
 Julie and Bruce Mirbach *
 Luanne and Jack Monahan
 Isaac Mostov
 Ainsley Onstott
 Ludmila Otero-Huertas
 Andrew and Lauren Panagotopoulos

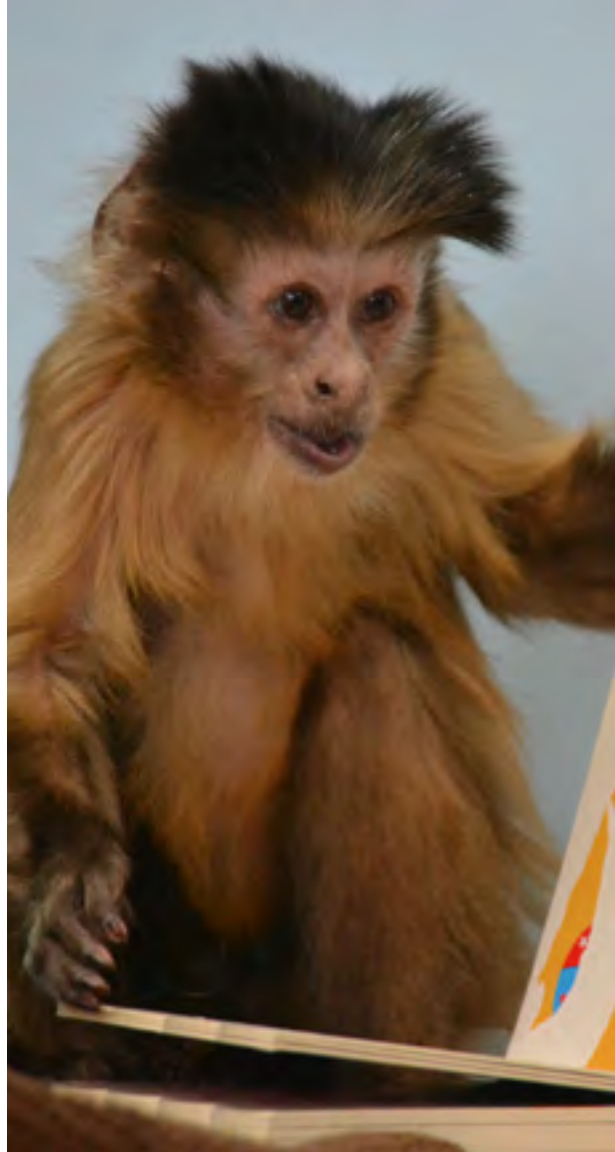
Lois and Richard Paris *
 George Patterson
 Ellen Patterson
 Donna Driscoll and Gina Perez
 Shellie and Denis Philbin
 Richard Piet *
 Todd Piper
 Laurent Porter
 Lee and Harold Potter, Esq.
 Barbara and Robert Raider
 Andrea and David Randall
 Melissa and Justin Rawlins
 Sondra Resnikoff
 Sheila Johnson Robbins
 Ingrid and John Robeckek
 Ellen Rogers
 Leila and Jamie Rome
 Caroline Schadle *
 Lorraine and Harry Scholte *
 Susan and Steven Sewall
 Janice and Curtis Shelton *
 Rebecca Sherwood *
 Nicole Skolout
 Ben Smoot *
 Michelle and Gary Starr
 Joy Olaus Surprenant
 Megan Talbert ^
 Jessica and Peter Tcherepnine
 Deborah Theobald
 Matthew Therault
 Daniel and Tanya Thrasher
 Giuseppe Tropeano
 Edward Turner
 Kristen Vagliardo
 Dee D. Webster #
 Susan and Richard Werman
 Jane and Christopher White
 Donna Wiilianinen
 Joel Wolff
 Barbara and Cary Wolinsky
 Christopher Young
 Michelle Young

GIFTS MADE IN MEMORY OF:

Betsie
Michael Burnich
Margaret Gray
Colin McLeod
Larry Miller
William G. Miller, Jr.
Cornelius J. Moriarty, Jr.
Katie Moriarty
Howard Henry Myers
Simone and Elwood Nestvold
Virginia Patterson
Joan Pelnar
Michael Reed
Shirley Mason Seagle
Catherine Soulier
Helen Maude Sterling
David Sullivan
Chau Thuy Thanh
Barbara Todd-Fields
Judith Yokaitis-Skutnik
Judy Zappia

IN KIND GIFTS:

Bryan Cave, LLP
The Columbus Hospitality Group
The Fenway Group
Lisa Flores
Frontstream
Patrick Gan
Halliday Construction
Absolut Vodka
Kevin Lewis Design
Klinkerbrick Winery
Lagunitas Brewing Company
Peterson Party Center
Robinson & Cole, LLP
Southwest Airlines
MS Walker
Walt Disney World
Winston Flowers



GIFTS MADE IN HONOR OF:

Travis Amick ~
Brian Ashby
Willard Baldwin
Walt Bauer
Rachel Bermont
Anthony Bialy
Quinn Borger
Mari Brady
William Brady
Elise Burgess and James Flament
Meghan Culligan Camacho
Gao Yuan Cheng
Lauri Coates
Kay and Doug Compton
Elaine and Matthew Connolly
Terry Conroy
John Cora
Kate Crawford
DeAnn Crompt
Patricia Doherty
Sue Drake
Evan Dugdale
Annie Ferrara
Mrs. Gallagher's 3rd Grade Class
Erin Giblin
Jennifer Good
Mary P. Happ
Judi Hindman #
B. Johnson
Carol Kinlan
Arlene Krave
Samuel Levine

The Madison-Daly Family
Ricky Manne
Katelyn McDonald
Marta McDowell and Kirke Bent
Shelby Melvin
Allyson Migneault ^
Abhinav Mupparaju
Beth Nellis
Kristine Nolan
Michael Park
Suzanne Payne
Alison S. Payne ^ and Douglas Leenhouts
Joan and Bill Piper
Susan and Brian Piper
Marilynn and Craig Piper
Edward Redovan
Danny Riggan, Sr.
Ellen Rogers
Matthew Rose
Aynsley Sandridge
Annie Schindhelm

Bob Schwaid
Gloria and Jeff Schwartz
Steve Snelson
Alan Solarz +
Sophia Spring
Bernice Stern
Valerie Straight
Susan Strong
Andrew Strong
Nancy Studivan
Ned Sullivan ~
Tyler Thompson
Rick Trevers
Lynn + and Ross Trimby
Dava Silva and Jon Vargosko
Blake Watters
Kaite Samya Wiles
Louise and Michael Wilmot #
Carolann Workman
Patricia Young
Jane Yusen +

MONKEY FACTS!

At the Monkey College, our service animals are taught using imitation-based, positive reinforcement training.

* Capuchin Caretaker/Monthly Donor + Board Member ^ Employee ~ Monkey Helper Recipient # Foster Family

We have attempted to be as accurate as possible in listing our donors. While we do not have space in this publication to print the names of every single contributor, we remain forever grateful for every gift of every size to Helping Hands. Please accept our sincere apologies if there are any errors or omissions and let us know so that we can correct our records.



We are grateful to you, our generous individuals, foundations, and businesses who support Helping Hands: Monkey Helpers. You enable us to create and support these priceless partnerships.

We also sincerely appreciate all of the federal, state, local, and municipal employees who make their donations to Helping Hands through the Combined Federal Campaign (CFC #11196) or Independent Charities of America.

Thanks to you, all of our service animals and lifetime support of placements are provided at no cost to the recipients.



HELPING  HANDS™
MONKEY HELPERS