

Greetings from the Executive Director

Assistive Devices

My father lived from the time he was 35 years old until he passed away at the age of 70 with multiple sclerosis. He would joke that he wished he could invent a robot to take care of some of his daily needs as he became less mobile. My father marveled at his electric wheelchair, and tried to understand the joys of a desktop computer in the early 1990s. He died in 1993 so did not really live long enough to benefit from cell phones, smart homes, and all the technologies that currently assist people who need assistance with daily living needs.



It is 2022 however, and we do have a plethora of innovative technologies to assist those living with physical disabilities with fully participating in all aspects of home, school, and community.

Nobody should be denied the opportunity for education, social interaction or meaningful employment because of a mobility issue. It is our purpose at Helping Hands: Monkey Helpers to make it possible for everyone to participate, if they want, in today's world. That is what our Assistive Technology Program, a portion of our Innovative Technology Strategy, aims to accomplish.

Assistive and adaptive devices could be technology that can be purchased online, are easy to use, and make an individual's day-to-day life easier. Generally, it might be a technology that is not covered by insurance and an individual or family cannot afford on their own. An assistive and/or adaptive device could be an adaptive utensil for cooking or bathing. The device may improve home automation, or be a device to make it easier to see in the dark, open or lock the front or back door to someone's home, or apartment, assist with cleaning or make the environment more comfortable.

As you read this you may know someone who needs a device or you may need a device, and wonder how the program works. Currently, we are diligently raising funds so we can implement the Assistive Device Program as quickly as possible. Second, the program is need based and the device cannot be covered by any type of insurance. We are not collecting applications yet, but hope to announce a start date soon. Once we announce the date, we will also announce guidelines.

We hope that you will support this program by [making a donation](#).

Sincerely,

Diane S. Nahabedian
Executive Director

Join us on April 6 for a monkey bath!

SAVE THE DATE for a special online event on Facebook Live – a Monkey Bath!



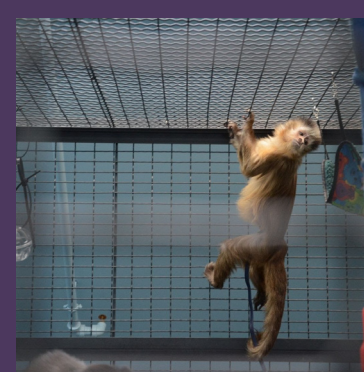
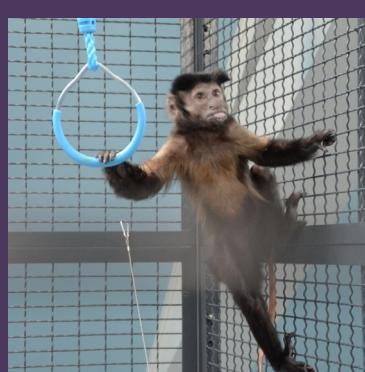
Join us on Facebook for this MUST-WATCH special event. Great for monkey lovers of all ages. You will have the opportunity to ask questions of an expert while our special guest soaks in the tub. Tune in at 11:00 am, Wednesday, April 6!

Join us April 6

Another Monkey Living Center Playspace is dedicated!

We were so honored this month to dedicate another play space here at the Monkey Living Center. Thank you to our long time friends Ingrid and John Robeck! We were so touched when they wanted to name one of our new spaces - you can see the monkeys really love playing in the Ingrid & John Robeck play area!

If you are interested in other naming opportunities at The Monkey Living Center, please contact Director of Development Julie Totten.

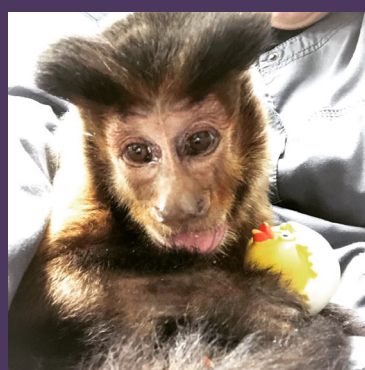


Birthday Round-up at the Monkey Living Center!

Please join us in wishing our monkeys who were born in March a very Happy Birthday!

CJ, Tucker, and Marty!

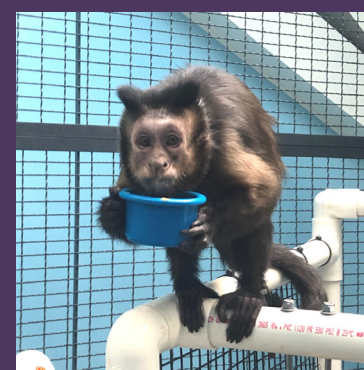
Did you know you can make a gift in honor of anyone's birthday? [Learn more.](#)



CJ



Tucker



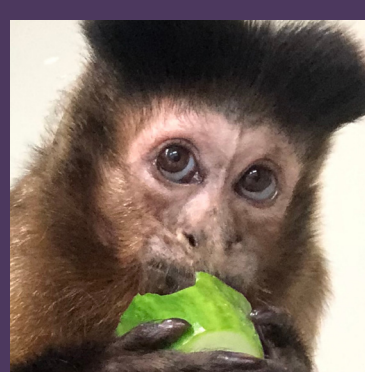
Marty

Join the Helping Hands Development Committee!

Helping Hands is actively seeking candidates interested in fundraising to work alongside senior staff, volunteers, and board members on our Development Committee.

Specifically, we are looking for people who have fundraising, marketing, and/or event planning skills and are willing to reach out to introduce us to potential donors/funders.

For more information, please contact Julie Totten, Director of Development at juliet@monkeyhelpers.org, or call 617.787.4419 x.113.



Adopt a monkey...symbolically of course!

Our sweet monkeys have cared for so many people living with physical disabilities as service animals and constant companions. Some are still paired with recipients and others are in their post-service years living at our Monkey Living Center and in special care homes. They all need you.

When you symbolically adopt a monkey, you are supporting housing, food, vet care, toys, healthy treats, and snuggly blankets for our capuchins.

Adopt me!